



THE BEST & THE SHINIEST

STAINLESS STEEL WHEEL COVERS & TRUCK ACCESSORIES



SHINIEST INDUSTRIES, INC.

📍 9F-5, No. 189 Keelung Road, Sec. 2, Taipei 11054, Taiwan

☎ +886-2-2377-4175

☎ +886-2-2377-3942

✉ sales@shiniest.com.tw

🌐 www.shiniestinc.com



OUR
COMPANY



PRODUCTS
VIDEO



OUR
BROCHURE



SHINIEST - THE WORLD-CLASS LEADING COMPANY SINCE 1983



ABOUT US

SHINIEST INDUSTRIES, INC.

Shiniest Industries, based in Taiwan, has been manufacturing and exporting of automotive and commercial vehicle accessories since 1983.

We are committed to manufacturing quality products that are well worth the prices while satisfying our clients who can carry the products with pride and confidence. In the past decades, we entered the fast-growing auto/truck accessories market with a strong force, with a mission to serve this market's need for improving vehicles' appearance and value as a trend-setter instead of a trend-follower.

With China's emergence in the manufacturing capacity in recent years, we have effectively expanded our production bases to cover both Taiwan and China so as to strengthen our sourcing and supply capability for better serving our customers. Our strong R&D/QC team with 40+ years of experience and reputation, have enabled us to efficiently help our customers develop unique designs to lead the competition in the market.

Our R&D team with modern engineering expertise and profound knowledge in the industry have made us highly capable of developing best products in order to meet great market demands.

Thank you for choosing Shiniest as your one-stop provider for all of your automobile styling needs. Drawing on our rich experience and professional services, we will continue to bring you more awesome products to help you stand out and outshine your competitors.



INDEX

STAINLESS STEEL WHEEL COVER

▶ EUROPEAN TRUCKS & BUSES

22.5" / 19.5" / 17.5" Locking-ring Wheel Cover	1-2
22.5" / 19.5" / 17.5" Bolt-on & 16" Snap-on Wheel Cover ...	3-4
Protector Cover & Axle Cover Set	5-6
Wheel Cover Set for Trucks / Vans	7

▶ JAPANESE TRUCKS & BUSES

Wheel Cover Set & Protector Cover	8
---	---

▶ AMERICAN TRUCKS & BUSES

22.5" / 19.5" / 17.5" Locking-ring Wheel Cover	9
Wheel Simulator Set for Pick-up Trucks / Vans	10

▶ ACCESSORIES

Nut Cover & Nut Cover Puller	11
Road Safety Products	12



22.5" Locking-ring Mount for EUROPEAN Trucks/Buses



19.5"/17.5" Locking-ring Mount for EUROPEAN Trucks/Buses

10225F-A
Front



SIZE
22.5"
LUG
10

10225R-A
Rear



20225F-A
Front



SIZE
22.5"
LUG
10

20225R-A
Rear



10195F-A
Front



SIZE
19.5"
LUG
8

10195R-A
Rear



10175F-A
Front



SIZE
17.5"
LUG
6

10175R-A
Rear



11225F
Front



SIZE
22.5"
LUG
10

11225R
Rear



21225R-A
Rear



SIZE
22.5"
LUG
10

31225R-A
Rear



11195F
Front



SIZE
19.5"
LUG
8

11195R
Rear



11175F
Front



SIZE
17.5"
LUG
6

11175R
Rear



20195F-A
Front



SIZE
19.5"
LUG
8

20195R-A
Rear



20175F-A
Front



SIZE
17.5"
LUG
6

20175R-A
Rear



32225R-A
Rear



SIZE
22.5"
LUG
10

Rear



Trim Ring

30175R-70

For 17.5" Wheel, 70mm Depth.

30195R-82

For 19.5" Wheel, 82mm Depth.

30225R-82

For 22.5" Wheel, 82mm Depth.
Also Fit Super Single Wheel.

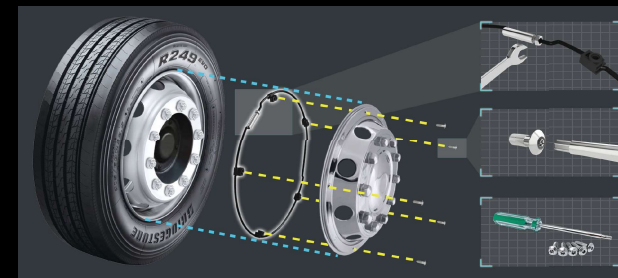
40225S

For 22.5" Wheel, 37mm Depth.

Super Single Wheel



"Locking-Ring" Universal Wheel Fitting System



- Easy & Safe Installation
- Shock-absorbing
- Anti-theft design
- Will not void O.E.M Truck Warranty.



Product & Installation
Video



22.5" Bolt-on Mount for EUROPEAN Trucks/Buses

72204F-A
Front



SIZE
22.5" x 8.25"
22.5" x 9"

PCD
10-stud,
335mm

73225S
Super Single Wheel



SIZE
22.5" x 11.75"

PCD
10-stud,
335mm

OFFSET
0mm



19.5"/17.5" Bolt-on Mount & 16" Snap-on Mount for EUROPEAN Trucks/Buses

70195F
Front



SIZE
19.5" x 7.5"
19.5" x 8.25"

PCD
8-stud,
275mm

70195F-O
Front



SIZE
19.5" x 7.5"
19.5" x 8.25"

PCD
8-stud,
275mm

71195S-A
Super Single Wheel



SIZE
19.5" x 14"

PCD
10-stud,
335mm

OFFSET
120mm

70225RN Series
Rear



SIZE
22.5"

PCD
10-stud,
335mm

MODEL NO.	WHEEL SIZE	DEPTH
70225RN-272	22.5" x 7.5"	272 mm
70225RN-285	22.5" x 8.25"	285 mm
70225RN-300	22.5" x 9"	300 mm



2-pc. Pack



4-pc. Pack



6-pc. Pack

Deep Nesting Design for dense pack
to save costs significantly on packing, shipping and storage

70195R Series
Rear Dual



PCD 8-stud, 275mm

MODEL NO.	WHEEL SIZE	DEPTH
70195RZ	19.5" x 7.5"	263 mm
70195RS	19.5" x 8.25"	276 mm
70195RS-290	19.5" x 8.25"	290 mm

73195S
Super Single Wheel



SIZE
19.5" x 14"

PCD
8-stud,
275mm

OFFSET
0mm

71225 Series
Super Single Wheel



SIZE
22.5" x
11.75"

PCD
10-stud,
335mm

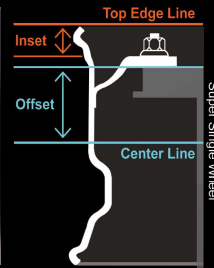
MODEL NO.	OFFSET	INSET	APPLICATION
71225T-120A	120 mm	40 mm	Iveco, Volvo, M-Benz, MAN
71225S-130A	130 mm	30 mm	DAF, Renault
71225S-135A	135 mm	25 mm	Iveco, Scania



71225 Series on Super Single Wheel



71225T-120A & 15225F on Volvo Truck



73175R
Rear Dual



SIZE
17.5" x 6.75"

PCD
10-stud,
225mm

10016F1-A
10016R1-A
Universal Snap-on



SIZE
16"

20016F1
20016R1
Universal Snap-on



SIZE
16"



22.5"/19.5"/17.5" Protector Cover for EUROPEAN Trucks/Buses

15225F-A



SIZE 22.5"
PCD 10-stud, 335mm
BRACKET 2

15225F-A-A3



SIZE 22.5"
PCD 10-stud, 335mm
BRACKET 3

15225F-P-A



SIZE 22.5"
PCD 10-stud, 335mm
BRACKET 2

15225F-P-A (LOGO)



SIZE 22.5" (Customized logo)
PCD 10-stud, 335mm
BRACKET 2

16225F-A



SIZE 22.5"
PCD 10-stud, 335mm
BRACKET 2

16225F-A-A3



SIZE 22.5"
PCD 10-stud, 335mm
BRACKET 3

15225F-P



SIZE 22.5"
PCD 10-stud, 335mm
BRACKET 2

E00225F



SIZE 22.5"
PCD 10-stud, 335mm
For Aluminum/Steel Wheel

15195F



SIZE 19.5"
PCD 8-stud, 275mm
BRACKET 2

16195F



SIZE 19.5"
PCD 8-stud, 275mm
BRACKET 2

15175F-P-A-205
15175F-P-A-245



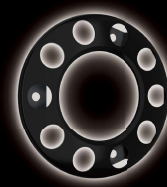
SIZE 17.5"
PCD 6-stud, 205/245mm
BRACKET 2

16175F-205
16175F-245

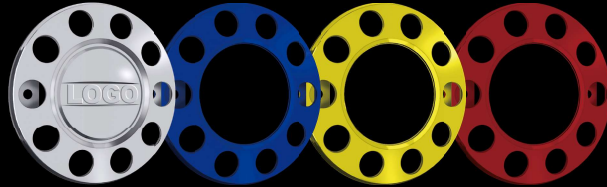


SIZE 17.5"
PCD 6-stud, 205/245mm
BRACKET 2

T16225F1-A-A3-BK



Steel Powder-Coated
SIZE 22.5"
PCD 10-stud, 335mm
BRACKET 3



Customized Logo Available
More Color Available

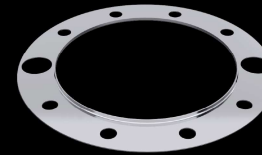


22.5"/19.5" Axle Cover Set for EUROPEAN Trucks/Buses

250RH
Rear Axle



250RP
Fixing Ring



SIZE 22.5"
PCD 10-stud, 335mm



225S-CAP
Rear Axle



225S-RING-A
Fixing Ring



SIZE 22.5"
PCD 10-stud, 335mm



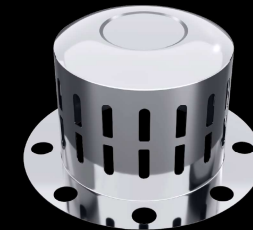
For Scania
Aluminum/Steel Wheel

225AC
Rear Axle



SIZE 22.5"
PCD 10-stud, 335mm

195AC-A
Rear Axle



SIZE 19.5"
PCD 8-stud, 275mm

195VERSION1
Front Open



SIZE 19.5" x 7.5"
PCD 8-stud, 275mm

195VERSION2
Front Close



SIZE 19.5" x 7.5"
PCD 8-stud, 275mm



22.5"/19.5"/16" Wheel Cover Set for EUROPEAN Trucks/Buses



17.5"/16" Wheel Cover Set & 22.5"/17.5" Protector Cover for JAPANESE Trucks/Buses

E20225CW / E20225DW

Dual Rear Trucks & Buses (With Multi-fit 32/33mm Nut Covers)



SIZE
E20225CW
22.5" x 9"
E20225DW
22.5" x 8.25"
PCD
10-stud,
335mm

E20195DW / E20195EW

Dual Rear Trucks & Buses



SIZE
E20195DW
19.5" x 8.25"
E20195EW
19.5" x 7.5"
PCD
8-stud,
275mm



PCD 6-stud, 222.25mm

MODEL NO.	WHEEL SIZE	APPLICATION
54175	17.5" x 6.75"	Hino 500 FC/FD, 2003~up
54175B	17.5" x 6"	Isuzu NPR, 2008~ up
54016	16" x 6"	Isuzu Elf (4-Ton)
60016B	16" x 6"	Mitsubishi (4-Ton)

70016

Mercedes-Benz Sprinter & MAN TGE & VW Crafter, 2006~2012



SIZE
16" x 5.5"
PCD
6-stud,
205mm

70016-12

MAN TGE & VW Crafter, 2018~up



SIZE
16" x 5.5"
PCD
6-stud,
205mm



SIZE 16" x 5.5"

MODEL NO.	PCD	APPLICATION
57016	5-stud, 203.2mm	Isuzu Elf (2-ton) & Toyota Coaster, 1982~up
57016A	5-stud, 203.2mm	Hino 300
60016	5-stud, 208mm	Mitsubishi Fuso Rosa, 2002~up
60016A	5-stud, 208mm	Mitsubishi Fuso Canter 413, 2013~up

70016-18A

Mercedes-Benz Sprinter, 2012~up



SIZE
16" x 5.5"
PCD
6-stud,
205mm

51016

Ford Transit 350HD, 2014~up



SIZE
16" x 6"
PCD
6-stud,
180mm

16225F-285-B-JP



SIZE
22.5"
PCD
8-stud, 285mm
BRACKET
(Dual-Hole) 2

16175F-222



SIZE
17.5"
PCD
6-stud, 222.25mm
BRACKET
2

52016

Iveco Daily Standard, 2000~up



SIZE
16" x 5.5"
PCD
6-stud,
170mm

53016

Iveco Daily Heavy-Duty, 2000~up



SIZE
16" x 6"
PCD
6-stud,
205mm





22.5"/19.5"/17.5" Locking-ring Mount for AMERICAN Trucks/Buses



17"/16" Wheel Cover Set/Snap-on Mount for AMERICAN Trucks/Buses

50225F-A-US
Front

20225R-A-US
Rear

21225R-A-US
Rear

31225R-A-US
Rear



SIZE
22.5"
LUG
10



SIZE
22.5"
LUG
10



20195F-A-US
Front

20195R-A-US
Rear

20175F-A-US
Front

20175R-A-US
Rear



SIZE
19.5"
LUG
8



SIZE
17.5"
LUG
6



Trim Ring

30175R-70-US
For 17.5" Wheel, 70mm Depth.

30195R-82-US
For 19.5" Wheel, 82mm Depth.

30225R-82-US
For 22.5" Wheel, 82mm Depth.
Also Fit Super Single Wheel.



30175R-70-US on wheel.



30195R-82-US on wheel.

CS18N-US

Chevrolet Silverado & GMC Sierra 3500 HD, 2011~up



Wheel Cover: Stainless Steel
Axle Cover: Chrome-plastic

SIZE
17"
PCD
8-stud,
210mm

51016-US

Ford Transit 350HD, 2014~up



SIZE
16" x 6"
PCD
6-stud,
180mm

51116-US

Ford F350 2W, 1968~1998 & GM C/K 2WD, 1973~2000



SIZE
16" x 6"
PCD
8-stud,
165.1mm

70016-18A-US

Mercedes-Benz Sprinter, for 2012~2019 USA DRW model



SIZE
16" x 5.5"
PCD
6-stud,
205mm

10016F1-A-US

10016R1-A-US

Universal Snap-on Wheel Cover



SIZE
16"

20016F1-US

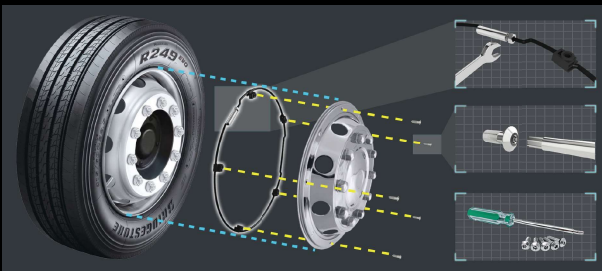
20016R1-US

Universal Snap-on Wheel Cover



SIZE
16"

"Locking-Ring" Universal Wheel Fitting System



- Easy & Safe Installation
- Shock-absorbing
- Anti-theft design
- Will not void O.E.M Truck Warranty.



Product & Installation
Video





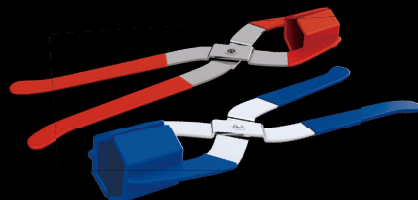
Nut Cover & Nut Cover Puller Accessories

	Z020	Z018	Z017	SNC30						
	21 mm	25.3 mm	27 mm	30 mm						
Nut Size (mm)	21	25.3	27	30						
Height (mm)	41 ± 1	32 ± 1	42 ± 1	54 ± 1						
Flare Size(mm)	33.2 ± 1	34 ± 1	42 ± 1	48 ± 1						
	SNC32L	SNC32-J	Z008-32	Z014-32	SNC3233D-A	SNC3233-S				
32 mm										
Nut Size (mm)	32	32	32	32	32/33	32/33				
Height (mm)	51 ± 1	46 ± 1	64 ± 1	52 ± 1	42 ± 1	45 ± 1				
Flare Size(mm)	48 ± 1	51 ± 1	51 ± 1	51 ± 1	57 ± 1	53 ± 1				
	SNC33L	SNC33-J	Z008	Z014	Z012	SNC3233D-A	SNC3233-S			
33 mm										
Nut Size (mm)	33	33	33	33	33	32/33	32/33			
Height (mm)	51 ± 1	46 ± 1	64 ± 1	52 ± 1	51 ± 1	42 ± 1	45 ± 1			
Flare Size(mm)	48 ± 1	53 ± 1	51 ± 1	51 ± 1	51 ± 1	57 ± 1	53 ± 1			
	Z004	Z005	Z006		Z007-41	Z009-41				
38 mm										
Nut Size (mm)	38	38	38		41	41				
Height (mm)	52 ± 1	52 ± 1	40 ± 1		44 ± 1	58 ± 1				
Flare Size(mm)	40.5	47 ± 1	40.5		50 ± 1	50 ± 1				
					41 mm					
Nut Size (mm)					41					
Height (mm)					44 ± 1					
Flare Size(mm)					50 ± 1					

Blister Pack Series



- B-30NCL**
20 pcs of SNC30
- B-32NCL**
20 pcs of SNC32L
- B-33NCL**
20 pcs of SNC33L



NP-3832

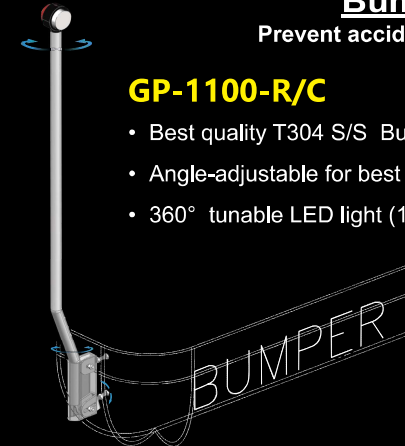
Nut Cover Pullers



Road Safety Products Accessories

Bumper Guide Pole

Prevent accidents and avoid bumper damage!



GP-1100-R/C

- Best quality T304 S/S Bumper Guide Pole!
- Angle-adjustable for best position!
- 360° tunable LED light (10~30V)



Tire Pressure Alert LED Cap

Best option to protect your truck/bus tire on the road!



- 100% Water-proof, chemical-proof!
- Self-calibration, reusable!
- Start flashing when tire drops 5~9 psi from standard pressure.

Wheel-Nuts Indicator & Retainer

Provide extra support to wheel-nuts & protect your wheel!



- Multi-size fitting design!
- Eye-catching color (color selectable)!
- Heat warning design!

